

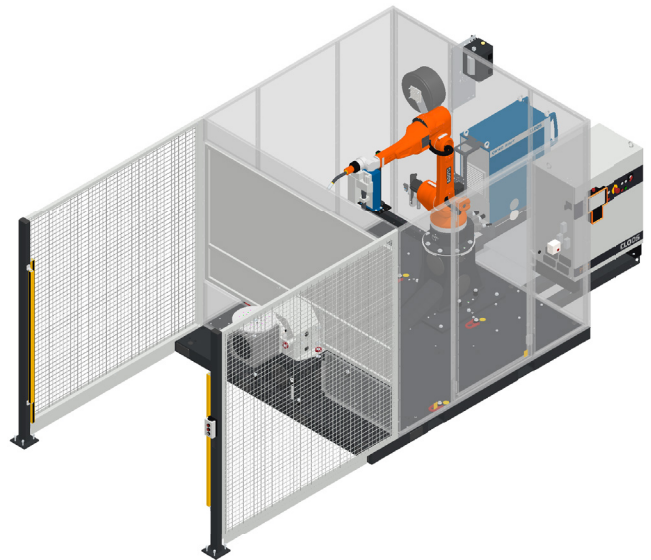
ExpertArc DA-550

Dual-Axis Positioning. Maximum Flexibility.

The ExpertArc DA-550 is a dual-axis welding cell designed for medium-sized parts that require both rotation and tilt for proper weld access. With 550 lb capacity per station, it gives fabricators the flexibility to position parts correctly without manual repositioning.

Compact and pre-configured, the DA-550 improves torch access, reduces handling time, and delivers consistent weld quality across high-mix production. It's built for shops that need more positioning control, without stepping into a larger, fully custom system.

Welding automation is worth doing right.



SMART FEATURES. PROVEN BENEFITS.

> Compact footprint

Fits into tight shop floors and high-mix production cells.

> Simple to run

Your team doesn't need to be robot programmers. Operators can run it with minimal training.

> Fast to deploy

Pre-configured, pre-tested, and ready to weld. You're up and running in days, not months.

> Consistent, high-quality welds

Clean, repeatable results every time. No guesswork. No surprises.

> Less downtime

Easier part loading, simpler programming, and fewer headaches in production.

> Dual-axis part positioning

Tilt, rotation, and a hollow wrist robot improve weld access and reduce manual repositioning.

> German engineered. American built.

Precision and reliability, backed by decades of CLOOS welding expertise.

INDUSTRIES

General Industries & Job Shops

Construction & Heavy Equipment OEM's

Agricultural Equipment

Truck & Trailer Manufacturers

PRODUCT SPECIFICATIONS

SYSTEM INCLUDES

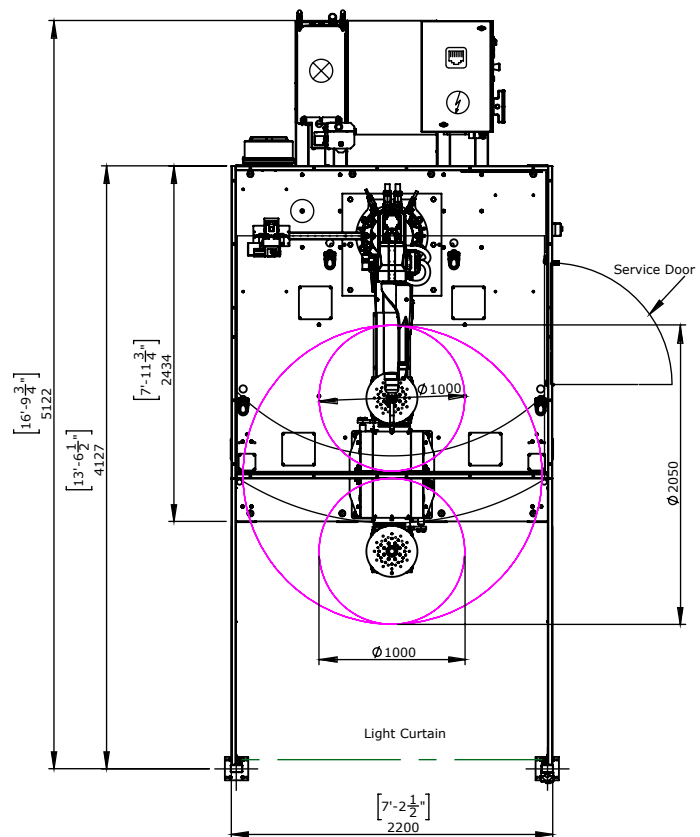
- > QRH-280 QIROX Hollow Wrist Robot
- > QRC 4.2 Robot Controller
- > StarT 406 Welding Power Source
- > Indexing Dual Station Positioner
- > Seam Tracking
- > Touch Sensing

OPTIONS AVAILABLE

- > Upgraded Power Source
- > Aluminum Package with Push/ Pull Torch
- > iCSE Offline Laser Sensor
- > Fume Extraction Options
- > RoboPlan Offline Programming Software
- > C-Gate Cloud Based DMS
- > CLOOS Cares Service Program
- > HMI Operator Panel
- > Part Tooling
- > Manax (Manual Jog)

MAXIMUM PART SIZE

Weight	550 lbs	250 kg
Length	39 in	990 mm
Diameter	31 in	785 mm



For additional details, please contact us at sales@cloosna.com or 847.923.9988.

SLS-1009 ExpertArc DA-550



CLOOS NORTH AMERICA
cloosna.com | 847.923.9988

WORTH DOING RIGHT

